

WALLISVILLE 8

Logistics Center

UP TO ±262,612 SF
COMING SOON IN 2025

16003-16005 WALLISVILLE ROAD, HOUSTON, TX 77049



Richard Quarles, SIOR
+1 713 888 4019
richard.quarles@jll.com

Joseph Berwick
+1 713 425 5842
joseph.berwick@jll.com

David Holland
+1 713 888 4095
david.holland@jll.com

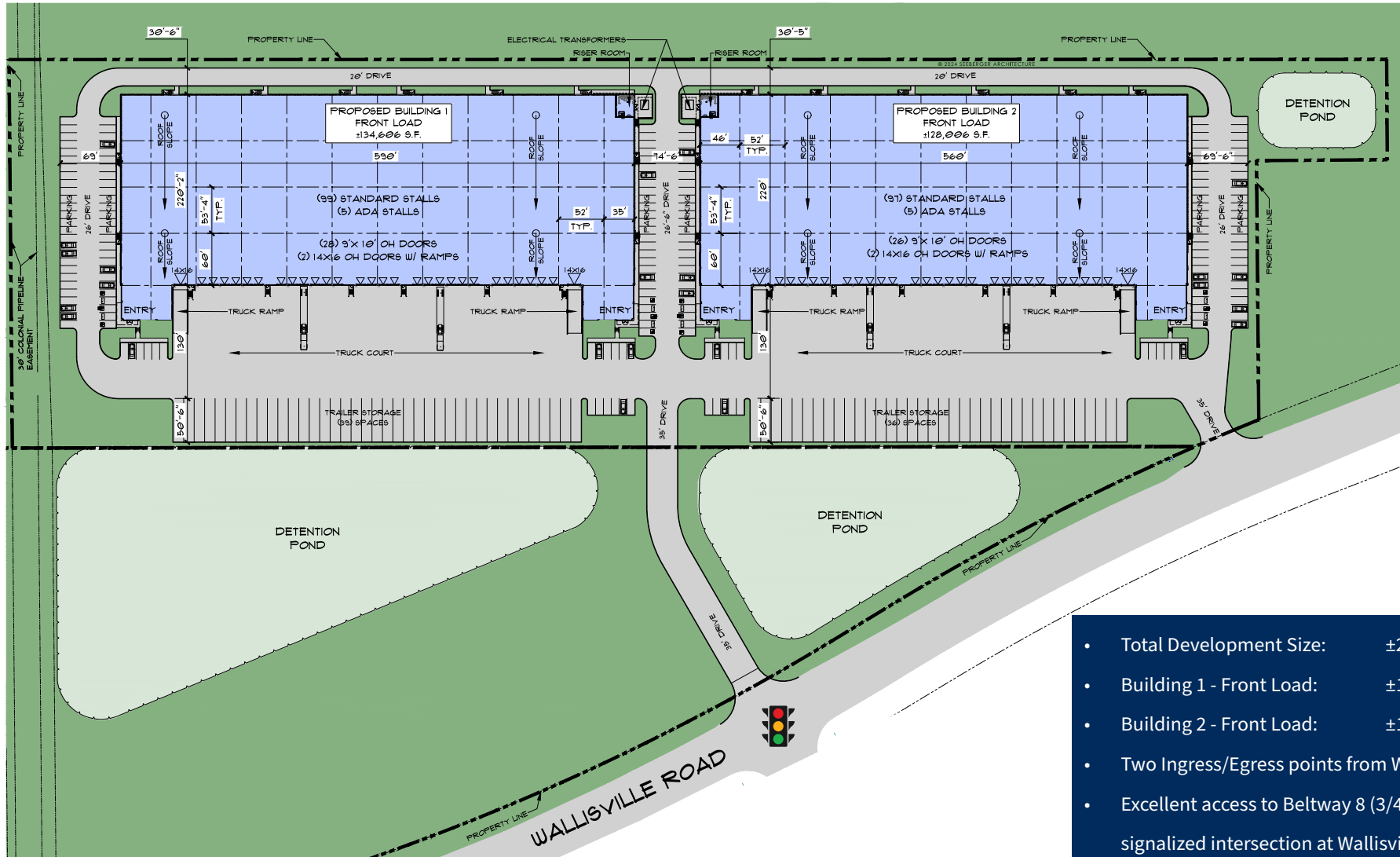
A DEVELOPMENT BY:



OVERALL SITE PLAN

UP TO $\pm 262,612$ SF
COMING SOON IN 2025

16003-16005 WALLISVILLE ROAD, HOUSTON, TX 77049



- Total Development Size: $\pm 262,612$ SF
- Building 1 - Front Load: $\pm 134,606$ SF
- Building 2 - Front Load: $\pm 128,006$ SF
- Two Ingress/Egress points from Wallisville Rd.
- Excellent access to Beltway 8 (3/4 Mile) with signalized intersection at Wallisville Rd



Richard Quarles, SIOR
+1 713 888 4019
richard.quarles@jll.com

Joseph Berwick
+1 713 425 5842
joseph.berwick@jll.com

David Holland
+1 713 888 4095
david.holland@jll.com

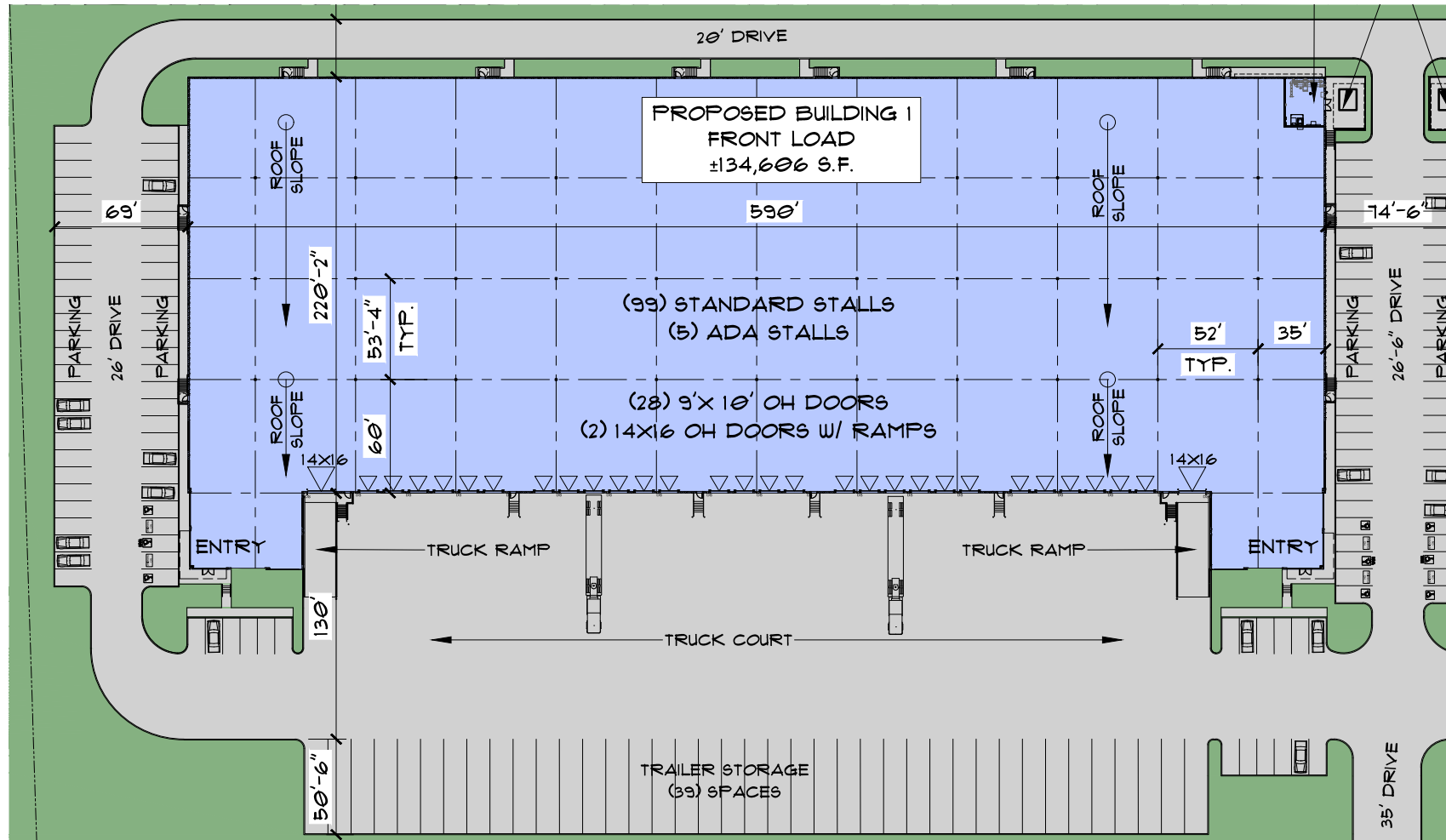
A DEVELOPMENT BY:



BUILDING 1 SITE PLAN



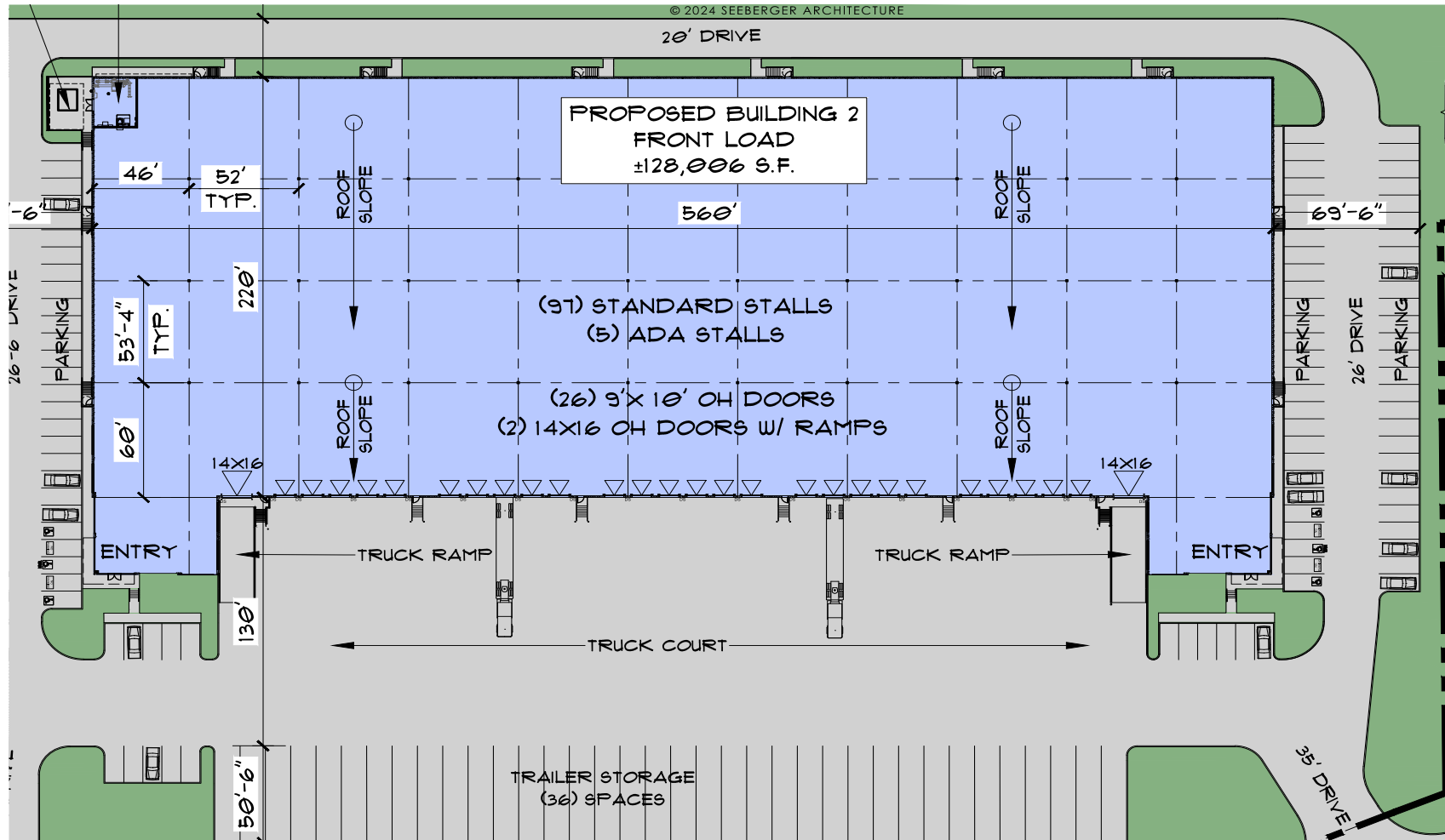
16003 WALLISVILLE ROAD, HOUSTON, TX 77049



Total SF:	±134,606 SF	Parking:	97	Drive-in Doors:	2 (14' x 16')
Office SF:	BTS	Trailer Parking:	39	Column Spacing:	52' x 60'
Clear Height:	32'	Configuration:	Front Load	Sprinklers:	ESFR
Truck Court Depth:	180'	Dock High Doors:	28 (9' x 10')	Speed Bay Depth:	60'

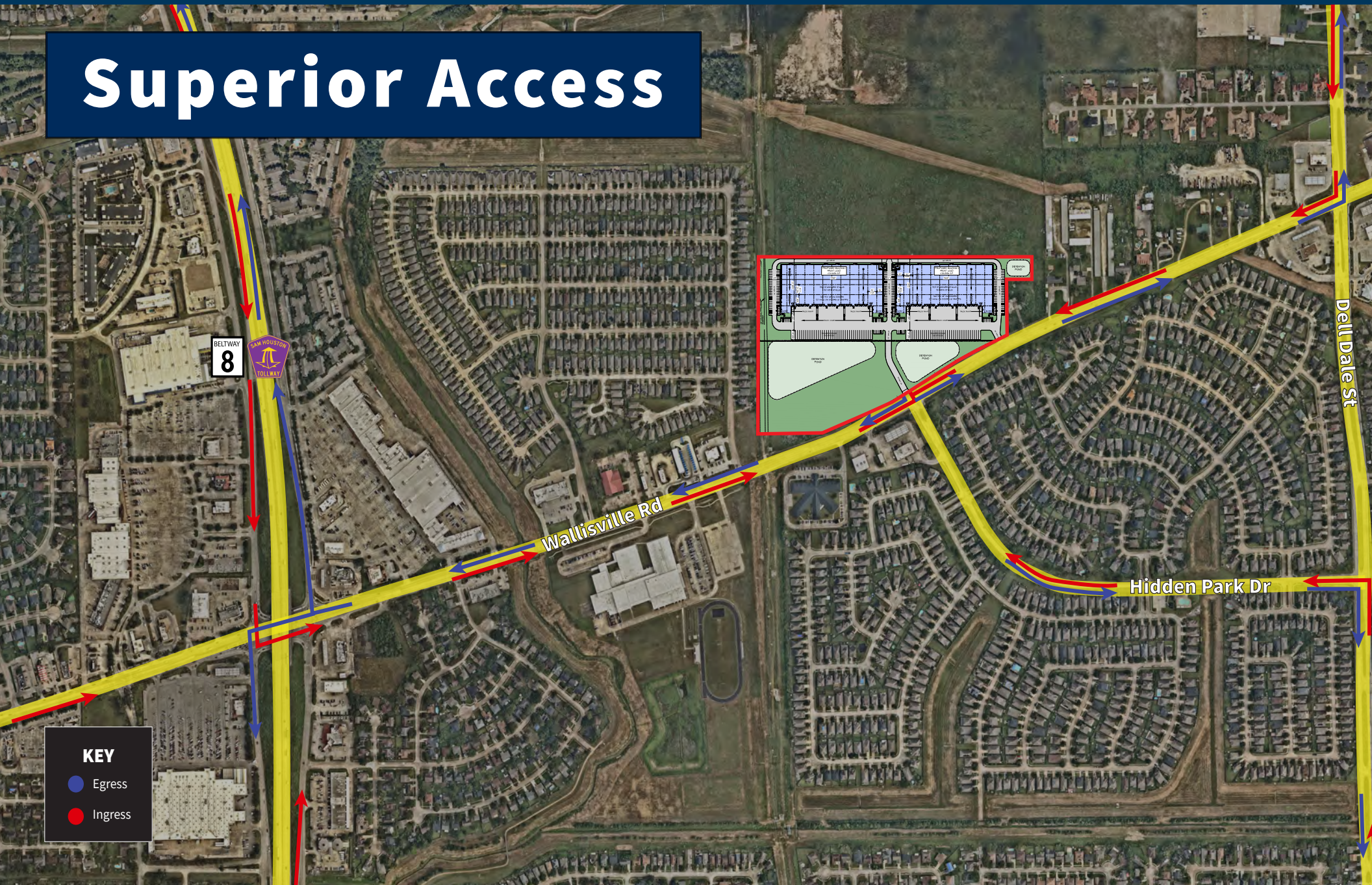
BUILDING 2 SITE PLAN

16005 WALLISVILLE ROAD, HOUSTON, TX 77049



Total SF:	±128,006 SF	Parking:	90	Drive-in Doors:	2 (14' x 16')
Office SF:	BTS	Trailer Parking:	36	Column Spacing:	52' x 60'
Clear Height:	32'	Configuration:	Front Load	Sprinklers:	ESFR
Truck Court Depth:	180'	Dock High Doors:	26 (9' x 10')	Speed Bay Depth:	60'

Superior Access



KEY

- Egress
- Ingress



Richard Quarles, SIOR
+1 713 888 4019
richard.quarles@jll.com

Joseph Berwick
+1 713 425 5842
joseph.berwick@jll.com

David Holland
+1 713 888 4095
david.holland@jll.com

A DEVELOPMENT BY:



STRATEGIC LOCATION

- Prime East Houston Location at Beltway 8 East and Wallisville Rd. providing strategic distribution and operational connectivity
- Development offers excellent access to Beltway 8, I-10, Highway 225, US-59.
- Close proximity to the petrochemical corridor, ship channel, and Port Houston Terminals.



Richard Quarles, SIOR
+1 713 888 4019
richard.quarles@jll.com

Joseph Berwick
+1 713 425 5842
joseph.berwick@jll.com

David Holland
+1 713 888 4095
david.holland@jll.com

A DEVELOPMENT BY:



Although information has been obtained from sources deemed reliable, JLL does not make any guarantees, warranties or representations, express or implied, as to the completeness or accuracy as to the information contained herein. Any projections, opinions, assumptions or estimates used are for example only. There may be differences between projected and actual results, and those differences may be material. JLL does not accept any liability for any loss or damage suffered by any party resulting from reliance on this information. If the recipient of this information has signed a confidentiality agreement with JLL regarding this matter, this information is subject to the terms of that agreement. ©2023 Jones Lang LaSalle IP, Inc. All rights reserved.